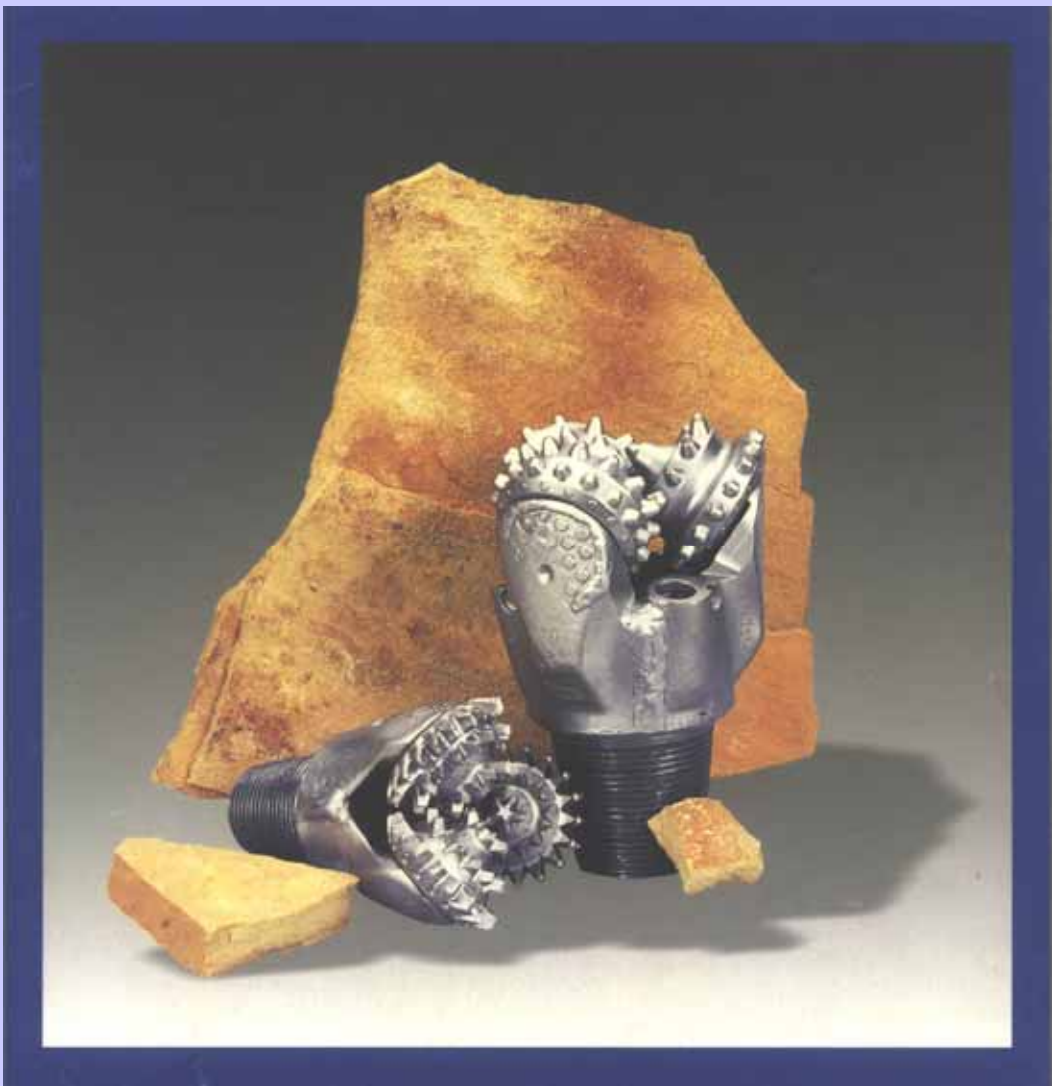




가
(MADE IN U.S.A)





()

INSERT TYPE



TOOTH TYPE



8X4X7=224가

가

1000

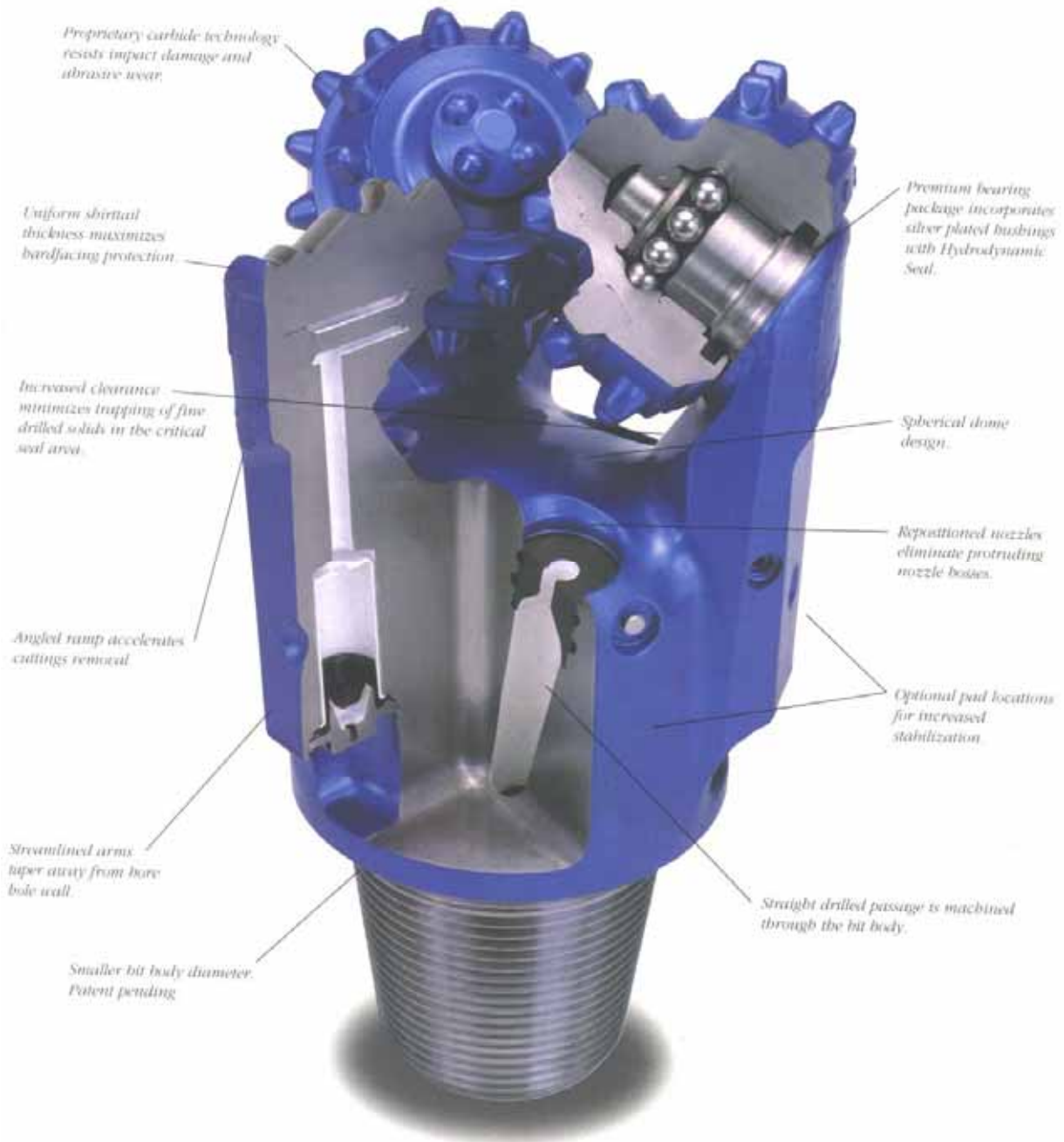
MAKER

SMITH, HUGHES, SECURITY, REED, MCDONALD(MADE IN USA)

		()
-	H-PROJECT	(97)	-	(97)
		(97)	-	(97)
		(97)	-	(97)
(98)	-		(98)	-
-		(98)	-	(98)
		(98)	-	(98)
		(99)	-	(99)
(99)	-		(99)	-
	T-PROJECT	(2000)	-	(2000)
-		(2000)	-	(2000)
	-2000			--

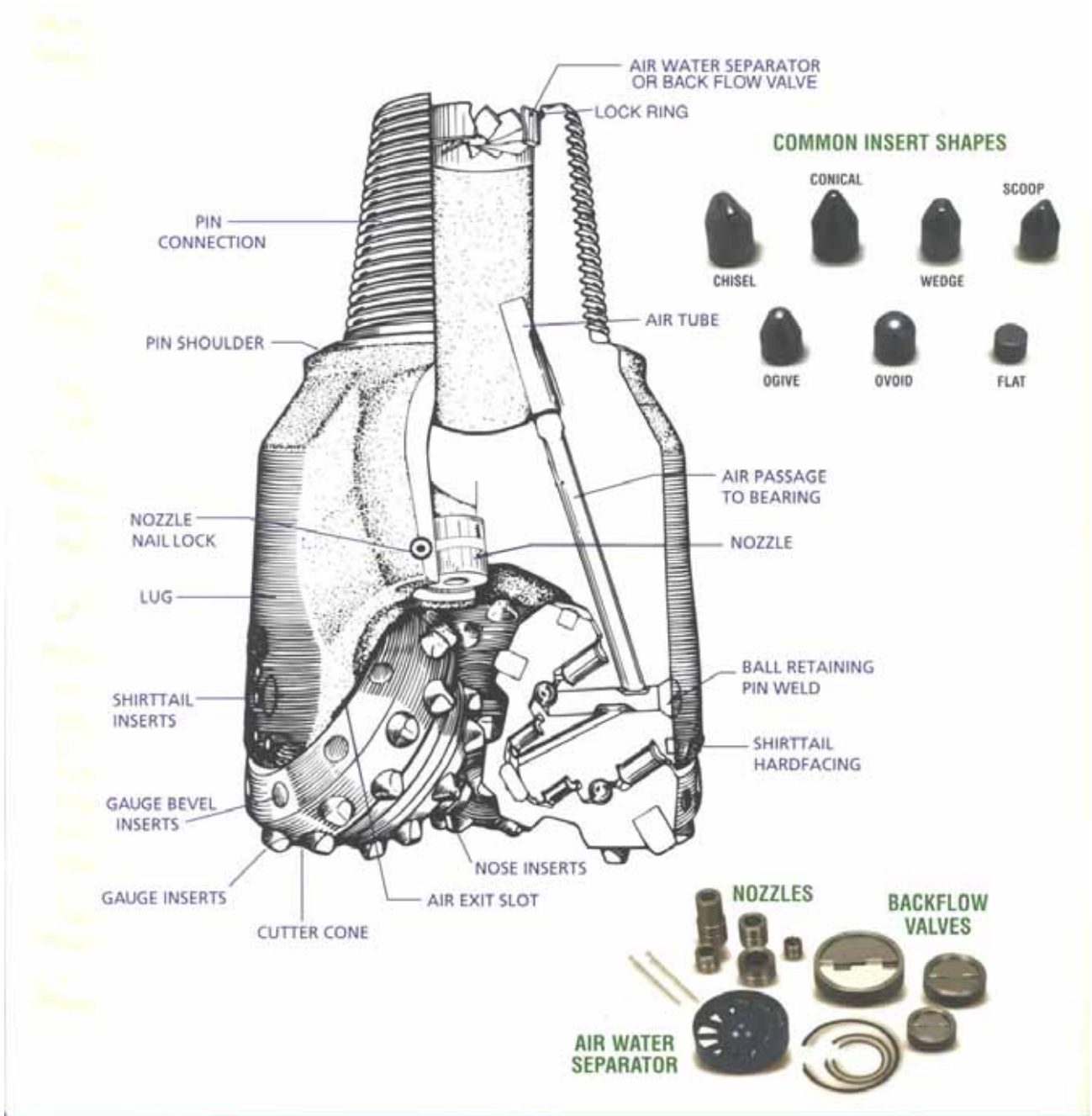


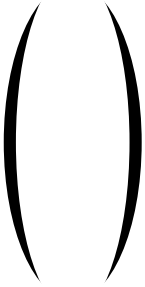
- 1.
- 2.





() -





in.	mm	lbs.	kg	lbs.	kg
3-1/2 to 3-7/8	89 to 98	10	5	12	5
4-3/4	121	15	7	20	9
5-7/8 to 6-1/4	149 to 159	35	16	45	20
6-1/2 to 6-3/4	165 to 172	45	20	55	25
7-3/8 to 8	187 to 203	75	34	85	39
8-1/8 to 8-1/2	206 to 216	90	41	95	43
8-5/8 to 9	219 to 229	95	43	100	45
9-1/8 to 9-1/2	232 to 241	125	57	130	59
9-5/8 to 9-7/8	245 to 251	135	61	145	66
10 to 10-5/8	254 to 270	165	75	175	80
11 to 11-7/8	279 to 302	195	89	210	95
12 to 12-1/4	305 to 311	205	93	225	102
13-1/4 to 15	337 to 381	345	157	380	173
16	406	410	186	450	205
17-1/2	445	515	234	545	248
18-1/2	470	525	239	570	259
20	508	625	284	700	318
22	559	1,000	455	1,170	532
24	610	1,385	629	1,400	636
26	660	1,450	659	1,550	704
28	711	1,550	704	1,650	750



		API
in.	mm	in.
5-7/8 - 6-3/4	149 - 172	3-1/2 Reg.
7-5/8 - 8-3/4	194 - 222	4-1/2 Reg.
9-1/2 - 14-1/2	241 - 367	6-5/8 Reg.
14-3/4 - 18-1/2	374 - 470	6-5/8 Reg. or 7-5/8 Reg.
18-5/8 - 28	471 - 708	7-5/8 Reg. or 8-5/8 Reg.
:		.



		API			
in.	mm	in.	mm	ft-lbs.	N-m
3-1/2 to 4-1/2	89 to 114	2-3/8 Reg.	60	3,000 to 3,500	4,000 to 4,800
4-5/8 to 5	118 to 127	2-7/8 Reg.	73	6,000 to 7,000	8,000 to 9,500
5-1/8 to 7-3/8	137 to 187	3-1/2 Reg.	89	7,000 to 9,000	9,500 to 12,000
7-5/8 to 9	194 to 229	4-1/2 Reg.	114	12,000 to 16,000	16,000 to 22,000
9-1/2 to 28*	241 to 711	6-5/8 Reg.	168	28,000 to 32,000	38,000 to 43,000
14-3/4 to 28*	375 to 711	6-5/8 Reg.	168	28,000 to 32,000	38,000 to 43,000
		or	or		
		7-5/8 Reg.	194	34,000 to 40,000	46,000 to 54,000
18-1/2 to 28*	470 to 711	7-5/8 Reg.	194	34,000 to 40,000	46,000 to 54,000
		or	or		
		8-5/8 Reg.	219	40,000 to 60,000	54,000 to 81,000
*					



16" 40MD SMITH

rpm/

- 1000-4000lb

- 40-150rpm

IADC /

- 6-1-5



16" MAX44(55) HUGHES

rpm/

- 2000-5000lb

- 40-120rpm

IADC /

- 625-635





17-1/2" M503D SMITH

rpm/

- 2000 - 5000lb

- 40 - 90rpm

IADC /

- 637-727



15" Q6J SMITH

rpm/

- 2000 - 5000lb

- 40 - 120rpm

IADC /

- 622 - 632





IADC

	X	X	X
- Bit Type		- Formation (softest to hardest)	- Bit Feature
(milled tooth/insert formation)			1 - Standard roller bearing
1 - 2 - 3 Milled tooth bits (softest to hardest)			2 - Roller bearing air cooled
			3 - Roller bearing gage protected
4 - 5 - 6 - 7 - 8 Insert bits (softest to hardest)			4 - Sealed roller bearing
			5 - Sealed roller bearing gage protected
			6 - Sealed friction bearing
			7 - Sealed friction bearing
			8 - Directional

-) 1-1-2
- Milled tooth bits softest rock
- Softest rock sub-category
- Roller bearing air cooled



/ :

402-3

: 052)239-3878

: 052)237-0358

WWW.DTH-HAMMER.COM