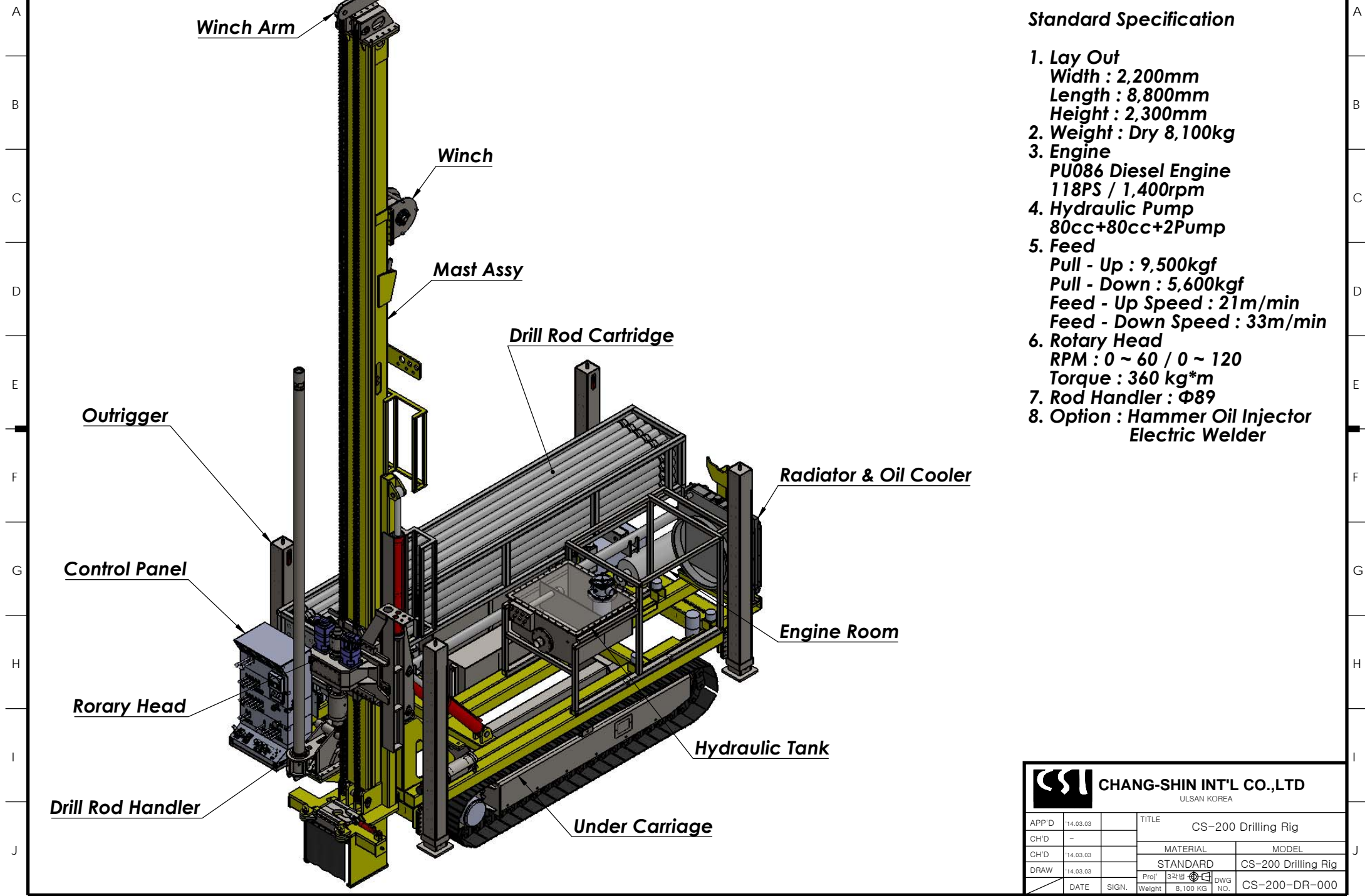


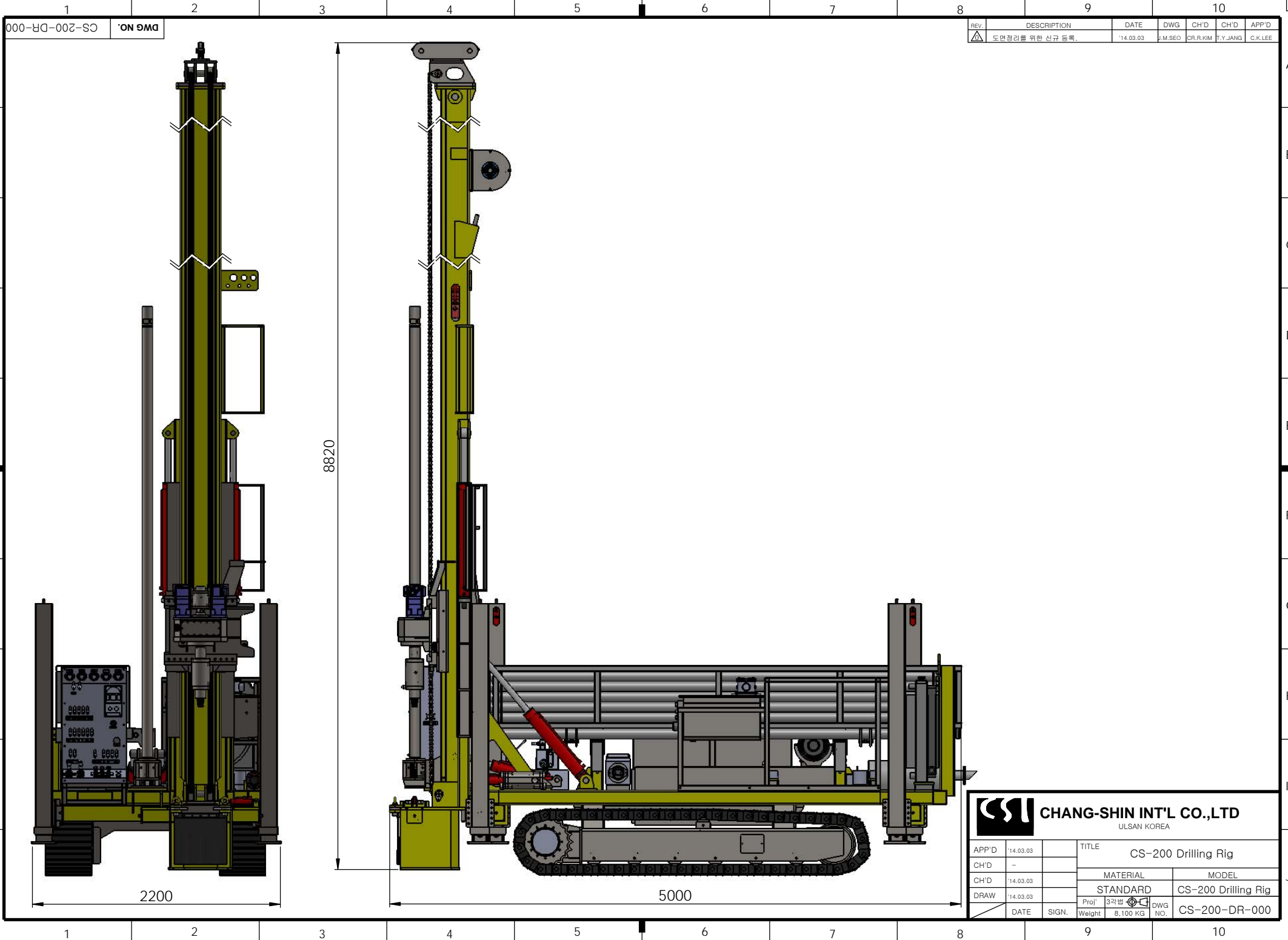
REV.	DESCRIPTION	DATE	DWG.	CH'D	CH'D	APP'D
△	도면정리를 위한 신규 등록.	'14.03.03	J.M.SEO	CR.R.KIM	T.Y.JANG	C.K.LEE



Standard Specification

1. Lay Out
 Width : 2,200mm
 Length : 8,800mm
 Height : 2,300mm
2. Weight : Dry 8,100kg
3. Engine
 PU086 Diesel Engine
 118PS / 1,400rpm
4. Hydraulic Pump
 80cc+80cc+2Pump
5. Feed
 Pull - Up : 9,500kgf
 Pull - Down : 5,600kgf
 Feed - Up Speed : 21m/min
 Feed - Down Speed : 33m/min
6. Rotary Head
 RPM : 0 ~ 60 / 0 ~ 120
 Torque : 360 kg*m
7. Rod Handler : Φ89
8. Option : Hammer Oil Injector
 Electric Welder

		CHANG-SHIN INT'L CO.,LTD ULSAN KOREA			
		APP'D '14.03.03		TITLE CS-200 Drilling Rig	
CH'D -		MATERIAL STANDARD		MODEL CS-200 Drilling Rig	
CH'D '14.03.03		DATE '14.03.03		SIGN. Prof' 3차원	
DRAW '14.03.03		DATE '14.03.03		DWG NO. CS-200-DR-000	
		Weight 8,100 KG			



000-DR-002-CS DWG NO.

REV.	DESCRIPTION	DATE	DWG.	CH'D	CH'D	APP'D
△	도면정리를 위한 신규 등록.	'14.03.03	J.M.SEO	CR.R.KIM	T.Y.JANG	C.K.LEE

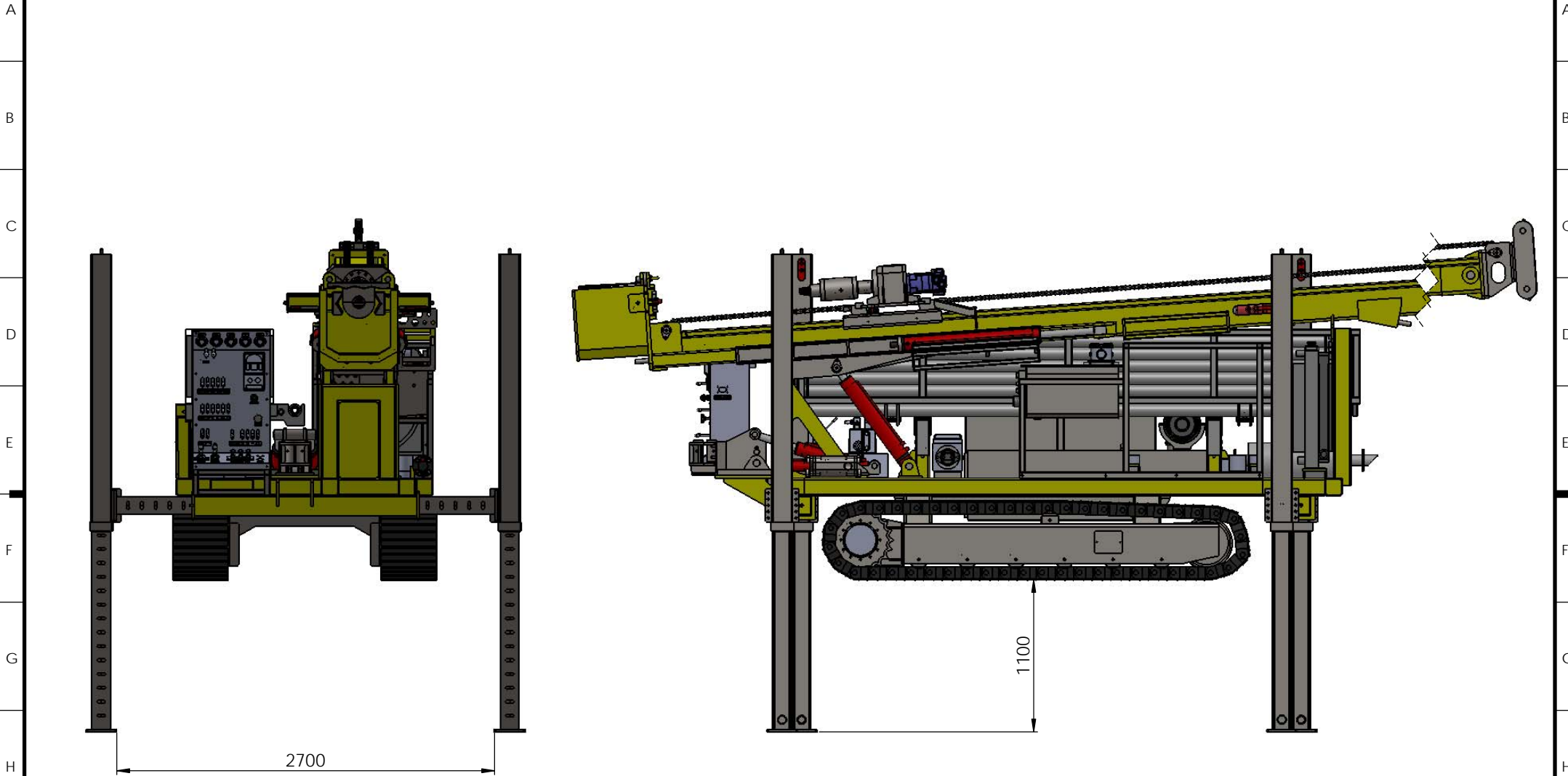
8820


2200

5000

		CHANG-SHIN INT'L CO.,LTD ULSAN KOREA	
APP'D	'14.03.03	TITLE CS-200 Drilling Rig	
CH'D	-	MATERIAL	MODEL
CH'D	'14.03.03	STANDARD	CS-200 Drilling Rig
DRAW	'14.03.03	Prof' 3각법	DWG NO. CS-200-DR-000
DATE	SIGN.	Weight 8.100 KG	

REV.	DESCRIPTION	DATE	DWG.	CH'D	CH'D	APP'D
△	도면정리를 위한 신규 등록.	'14.03.03	J.M.SEO	CR,R.KIM	T.Y.JANG	C.K.LEE



 CHANG-SHIN INT'L CO.,LTD ULSAN KOREA		TITLE	
		CS-200 Drilling Rig	
APP'D	'14.03.03	MATERIAL	
CH'D	-	MODEL	
CH'D	'14.03.03	STANDARD	CS-200 Drilling Rig
DRAW	'14.03.03	Prof' 3차법	DWG NO.
DATE	SIGN.	Weight 8.100 KG	CS-200-DR-000